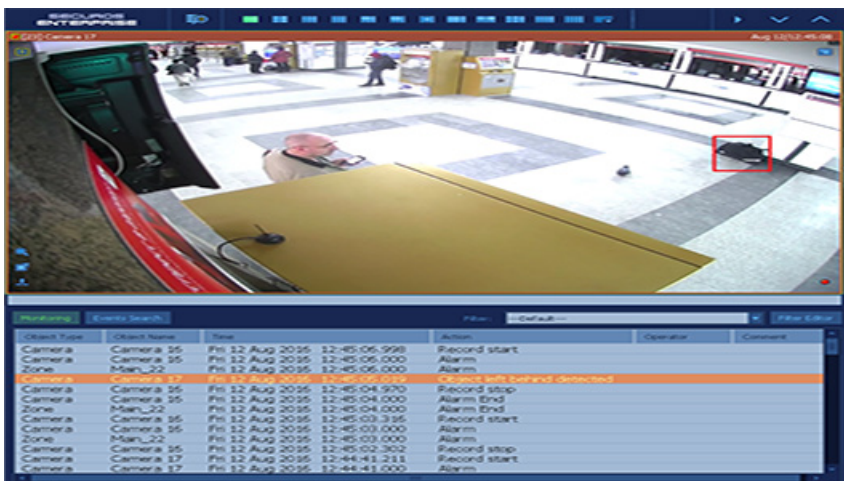




SECUROS

# SECUROS TRACKING KIT

## Situational Video Analytics



The Tracking Kit, plugin of the SecurOS™ Computer Vision subsystem offers the SecurOS™ Situational Video Analytics Suite. This Suite provides a set of advanced video analytics detectors designed to increase situational awareness of **SecuROS** operators.

Tracking Kit detectors will streamline operator efficiencies by not requiring constant monitoring of control areas; improving operator event processing; and by monitoring/controlling several locations, without impact the the security staff.

### Technology Overview

#### Hardware-Agnostic System

No specialized cameras or other hardware is required. System is hardware-agnostic.

#### Programmable Logic Event Processing

Provides ability to automate a large variety of routine operations, performed consistently in high volume - 24x7.

#### Cutting Edge Video Analytics Algorithms

Uses advanced algorithms for object tracking, foreground extraction, sudden lighting changes and much more.

#### Minimized False Positives or Missed Events

Maintained by advanced settings for each control zone and operating conditions.

#### Unlimited Number of Detectors

One system can run an unlimited amount of detectors, as well as being able to enable multiple detectors per camera.

#### Integrated with SecurOS™ VMS

Seamlessly works alongside the SecurOS™ video management software as well as other **SecuROS** Analytics modules.

### Applications

- **Object Left Behind** - Trade and service enterprises, metros, airports, business centers, checkpoints.
- **Loitering** - Parking, ATM, pedestrian zones.
- **Crowd Detection** - Retail, Sports/Cultural sites, pedestrian zones, adjacent territory to administrative/gov't buildings.
- **Intrusion Detection** - Cultural facilities (e.g., monuments), transportation infrastructure (e.g., bridges).
- **Object Counter** - Customs & passport control, cultural facilities (e.g., art gallery), secure areas of buildings/infrastructure, location requiring occupancy control.
- **Running Detection** - Metros, airports, any location where running can be construed as suspicious behavior.



SECUROS PREMIUM



SECUROS ENTERPRISE

Compatible with ISS SecurOS™ Premium and Enterprise



[www.isscctv.com](http://www.isscctv.com)

### Key Features

#### Object Left Behind Detector

Designed to detect objects/packages left behind.

#### Loitering Detector

Designed to detect people moving within a controlled area during a long period of time.

#### Crowd Detector

Designed to detect large groups of people in open areas and premises providing an early warning of public unrest and disorder.

#### Intrusion Detector

Designed to detect objects that intersect the perimeter of a restricted area.

#### Object Counter

Designed to detect objects that intersect a control line (e.g., people, vehicles). In/Out count provided.

#### Running Detector

Designed to detect people moving at a speed exceeding a predefined value.

#### Object Classifier

Will classify the detected/tracked object as Person/Vehicle using advanced algorithms. Additionally, results can be double-checked by object size and aspect ratio.

#### Quick Archive Access

By clicking on any of the detector events from the *SecurOS™ Event Viewer*, user can immediately see the corresponding video in the **SecurOS Media Client**.

#### Object Highlighting

Objects of interest will be highlighted in the video archive.

#### Advanced Event Handling

Based on Tracking Kit detector events, **SecurOS** can create visual notifications on the *SecurOS™ Event Viewer*, *Alarm Monitor*, *2D/3D Maps*, *Video Wall*; as well as send alerts to Emergency Service Centers (i.e. 911).

### Specifications

ISS Platform Support	
Supported Operating Systems	Windows 7, 8, 8.1, 10, 2008 R2, 2012 R2, (32/64 bit)
SecurOS™ VMS version support	SecurOS™ Premium SecurOS™ Enterprise
Supported Video Formats	
IP Video format supported	H.264, MPEG4, MxPEG, MJPEG
Analog video format supported	NTSC, PAL
Camera Technical Data	
Supported camera types	Fixed (box/dome), 360° PTZ ( <i>*FIXED CAMERAS ARE RECOMMENDED</i> )
Supported camera views	Angle, Overhead, Horizontal ( <i>*some detectors will work better on specific views</i> )
Minimal required resolution	320x240 ( <i>maximum resolution not limited</i> )
Minimal required FPS	15 frames per second
Additional Technical Data	
Minimal linear size of detected/tracked object	5% of frame size
Object classifiers	Person, Vehicle
System Output	Camera Name/ID Detector Name (Object Left Behind, Loitering, Crowd Detection, Counting, Intrusion, Running) Event Name Event Description Timestamp of Event Snapshot of entire frame ( <i>outline object</i> )

[www.isscctv.com](http://www.isscctv.com)



INTELLIGENT SECURITY SYSTEMS

Aspen Corporate Park  
1480 U.S. 9 North, Suite 202  
Woodbridge, NJ USA 07095

+1 732 855 1111 office

+1 732 855 1175 fax

[sales@isscctv.com](mailto:sales@isscctv.com)

Argentina	+54 11 5252 8779
Chile	+56 9 65732993
Colombia	+57 (312) 4783127
Mexico	+52 55 8421 3095
Peru / Bolivia	+51 997 111678
Central America / Caribbean	+502 5517-8395
South Africa	+27 (0) 8 333 08 767
Ukraine	+38 (044) 238 24 83
UAE	+971 55 4144 201
Brazil	+ 55 11 2262-2894